



Installation Manual

JANUARY 12, 2024

TECH-ARROW a.s.

KAZANSKÁ 5, 821 06 BRATISLAVA, SLOVAKIA

All Rights Reserved



Table of Contents

1	Introduction	3
2	Installation.....	4
2.1	Hardware and software requirements	4
2.2	Installation Environment.....	4
2.3	Installation of contentGATE.....	4

1 Introduction

ContentGATE is a software application that allows users to migrate emails, files, metadata and other related records fast and securely from one legacy archive system to another archive system.

contentGATE has been developed to solve the

- a) **mailbox archive migration** and
- b) **file archive migration** scenarios in an organization.

The migration process with contentGATE enables to transfer the data from the source to the target archive. It is possible to **migrate 1) items** and **2) also shortcuts**.

- 1) Item migration means transferring archived documents from one archive to another.
- 2) Shortcut migration converts shortcuts in user mailboxes (in case of mailbox migration) and in document management systems (in case of file migration) so that they point to the new location, i.e. to the target archive.

The reasons why a customer migrates data from one system to another might be various: the old system is not supported any more, the archive system of company branches should be merged, or the capacity and performance of the old archive is no more satisfactory. The possibility of the archive migration reduces the costs and risks of moving large amount of data. It ensures that all data remain accessible in the new archive system.

This manual will inform the reader about the contentGATE prerequisites and its installation procedure.

2 Installation

2.1 Hardware and software requirements

- .NET Framework 4.5
- MS Outlook, 64-bit version (2010/2013 or higher is needed for email migration. Click-to-Run Outlook is supported!)
- Operating system: Windows -Server 2012, Windows Server 2012 R2, Windows Server 2016, Windows Server 2022 (Learn more about the supported operating systems [here](#)).
- 2-cores CPU at 3.00 GHz minimum
- 8 GB of RAM
- 40 GB free space on the partition, where contentGATE installed

2.2 Installation Environment

It is recommended to install contentGATE on a Windows server. Windows 2008 R2 or higher is supported.

contentACCESS supports virtualized environment.

The required database space is dependent on the amount of data to be migrated. We advise to have approximately 10 GB for 10 million emails.

2.3 Installation of contentGATE

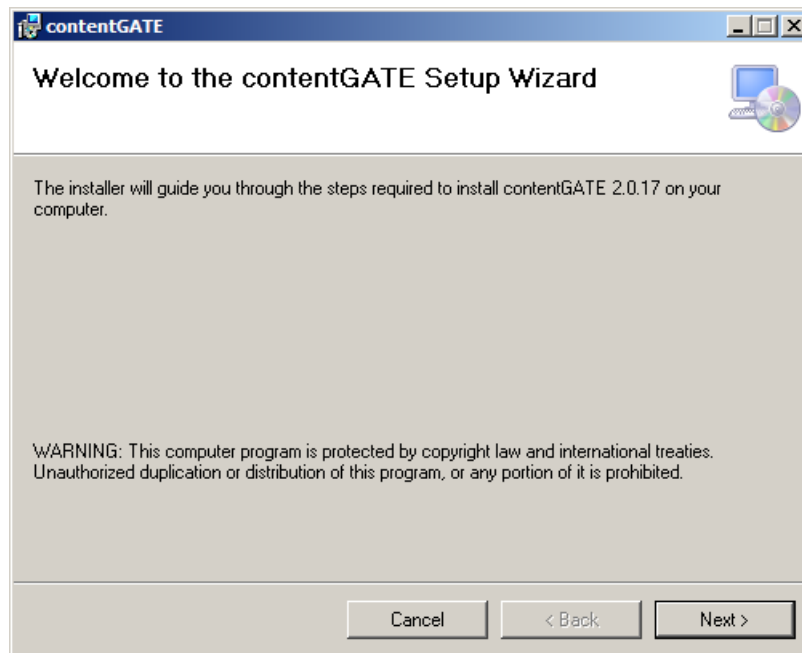
The user's MS Outlook bitness must be considered before the installation process is started. 32-bit and 64-bit contentGATE versions have separate setups.

It is highly recommended to use 64-bit contentGATE setup whenever possible. Wish you use 32-bit setup, please contact our professional Support Team at [this](#) email address.

***Note:** 32-bit contentGATE setup is required if contentGATE must be run on a 32-bit operation system, or you use 32-bit version of MS Outlook and it cannot be upgraded to 64-bit version due to another applications running with it.*

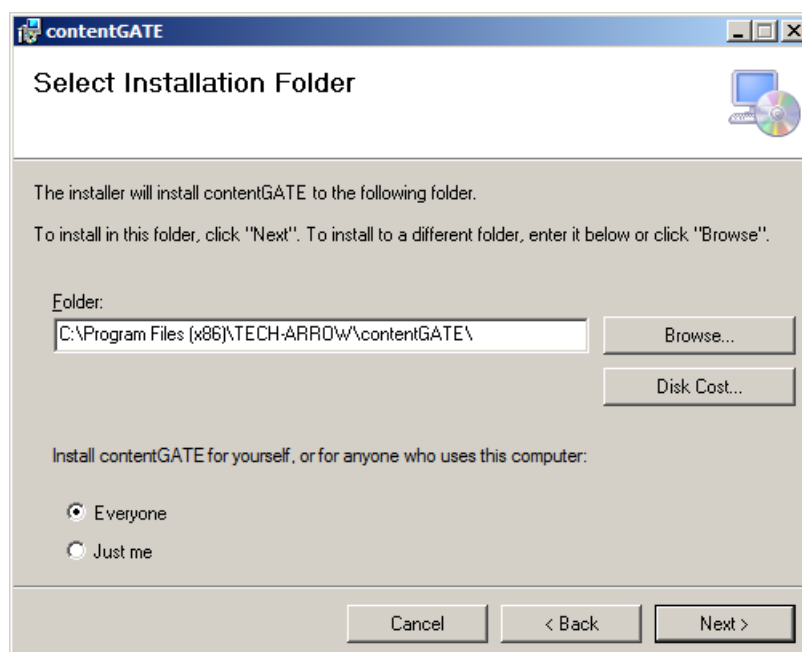


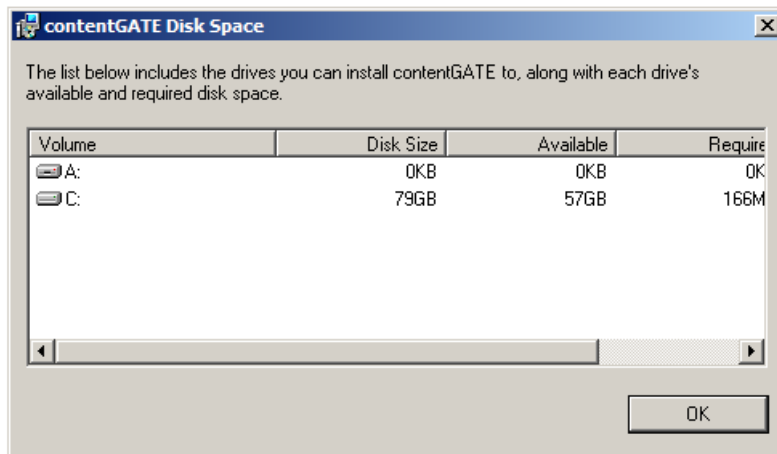
The contentGATE application installs simply in few moments. Just run the contentGATE_setup_xxx.msi. On the Welcome page click **Next**.



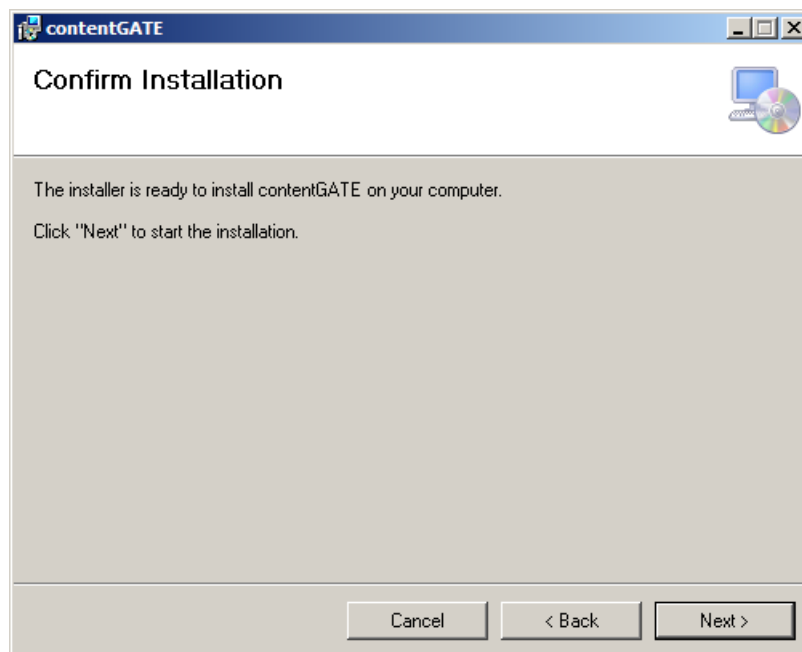
In the following dialog the destination folder can be changed. To check if there is enough space on the given location, click **Disk Cost...** button.

By default the product installs for every user of the computer. However, should you want to make it accessible only for the logged on user, select the **Just me** radio button. Then click **Next**.





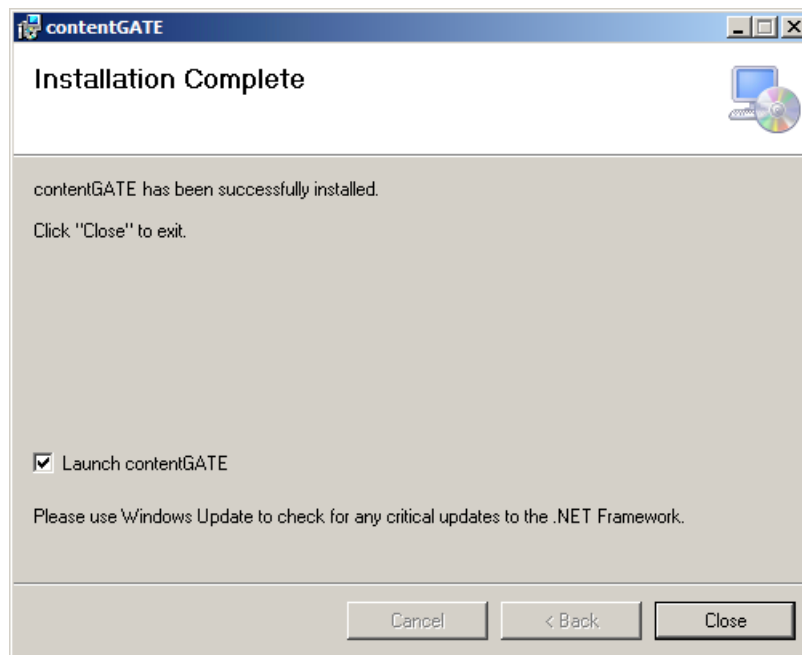
Click **Next** once more to start the installation process.



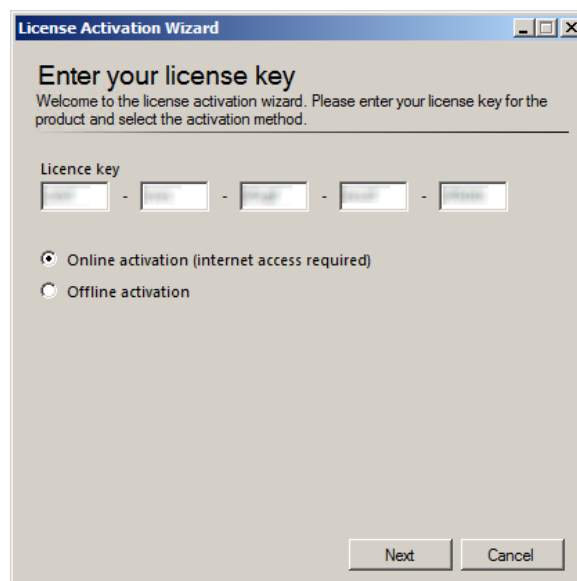
Note: If there are any unwanted applications running in the background which must be updated, the installer will warn you about this. It is recommended to close these applications and further continue with the installation process.

When the installation finishes, click **Close**.

Note: If you want to launch the application immediately, check the **Launch contentGATE** checkbox before closing the wizard.



Now the administrator will be required to enter the license key.



There are two options how to activate a license key:

1) **If you choose online activation** (internet access is required) – click **Next** and your license will be activated automatically.

2) **If you choose offline activation** (no internet access is required) – click **Next** and send the license request information from the textbox below to the TECH-ARROW sales department. You can simply copy the **License request information** text directly to the email or you can save the information via [Save to file](#) option in .dat format and send the request as an attachment.

The image displays two side-by-side screenshots of the 'License Activation Wizard' application window. Both windows have a title bar with standard Windows window controls (minimize, maximize, close) and a close button (X).

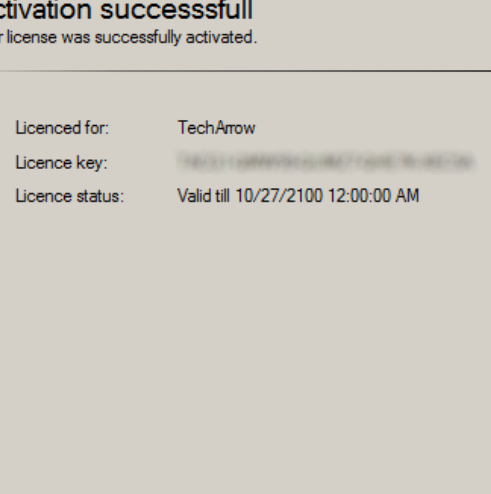
Left Screenshot:

- Title Bar:** License Activation Wizard
- Section Header:** Offline activation
- Text:** Please send the license request information to the Tech-Arrow sales department based on what we can generate the license activation data for you.
- Section Header:** License request information
- Text Box:** Contains a long alphanumeric string: `sjv64nP5455AgZ2jae45pXmUuaahS9nTrjc4ZwDGGMzFJn6+aMkxVw952kZZ4EIBs3eN8pF1t80wSKvMu0u/vrHt287BhjOTcRdFz9ujwW9s0cR8PteX318oeFRzpTukVckUBZphtmlJnMZw+LQ0YrxEOd5QFN1NbSrVs2nHjs/nZE9+ghurm+ShJfafM2KxwMEeh4PWdQ=`
- Buttons:** A blue 'Save to file' link is below the text box. At the bottom are 'Back', 'Next', and 'Cancel' buttons.

Right Screenshot:

- Title Bar:** License Activation Wizard
- Section Header:** Offline activation
- Text:** Please send the license request information to the Tech-Arrow sales department based on what we can generate the license activation data for you.
- Section Header:** License request information
- Text Box:** Contains the same alphanumeric string as the left screenshot.
- Buttons:** A blue 'Save to file' link is below the text box. At the bottom are 'Back', 'Next', and 'Cancel' buttons.

Red arrows in both screenshots point to the 'Next' button, indicating the progression of the wizard.



The screenshot shows a window titled "License Activation Wizard" with a blue header bar. The main content area has a light gray background. At the top, the text "Activation successfull" is displayed in a large, bold, black font. Below it, a smaller line of text reads "Your license was successfully activated." A horizontal line separates this message from the license details below. The license details are presented in a list-like format with labels on the left and values on the right: "Licenced for:" followed by "TechArrow", "Licence key:" followed by a blurred key, and "Licence status:" followed by "Valid till 10/27/2100 12:00:00 AM". At the bottom of the window, there are three buttons: "Back", "Close", and "Cancel", each enclosed in a rectangular box.

License Activation Wizard

Activation successfull

Your license was successfully activated.

Licenced for: TechArrow

Licence key: [blurred]

Licence status: Valid till 10/27/2100 12:00:00 AM

Back Close Cancel

8/8